

SEE SHEET ONE FOR LEGEND AND GENERAL NOTES

RIGHT OF WAY MAP

FLORIDA DEPARTMENT OF TRANSPORTATION
SURVEYING AND MAPPING

APPROVED BY	DATE
<i>[Signature]</i>	8/28/21

REVISION	BY	DATE	REVISION	BY	DATE

BY	DATE
PRELIM A. ORTOLA	01/28/22
FINAL S. HAMP	02/13/22
CHECKED A. ORTOLA	06/16/22

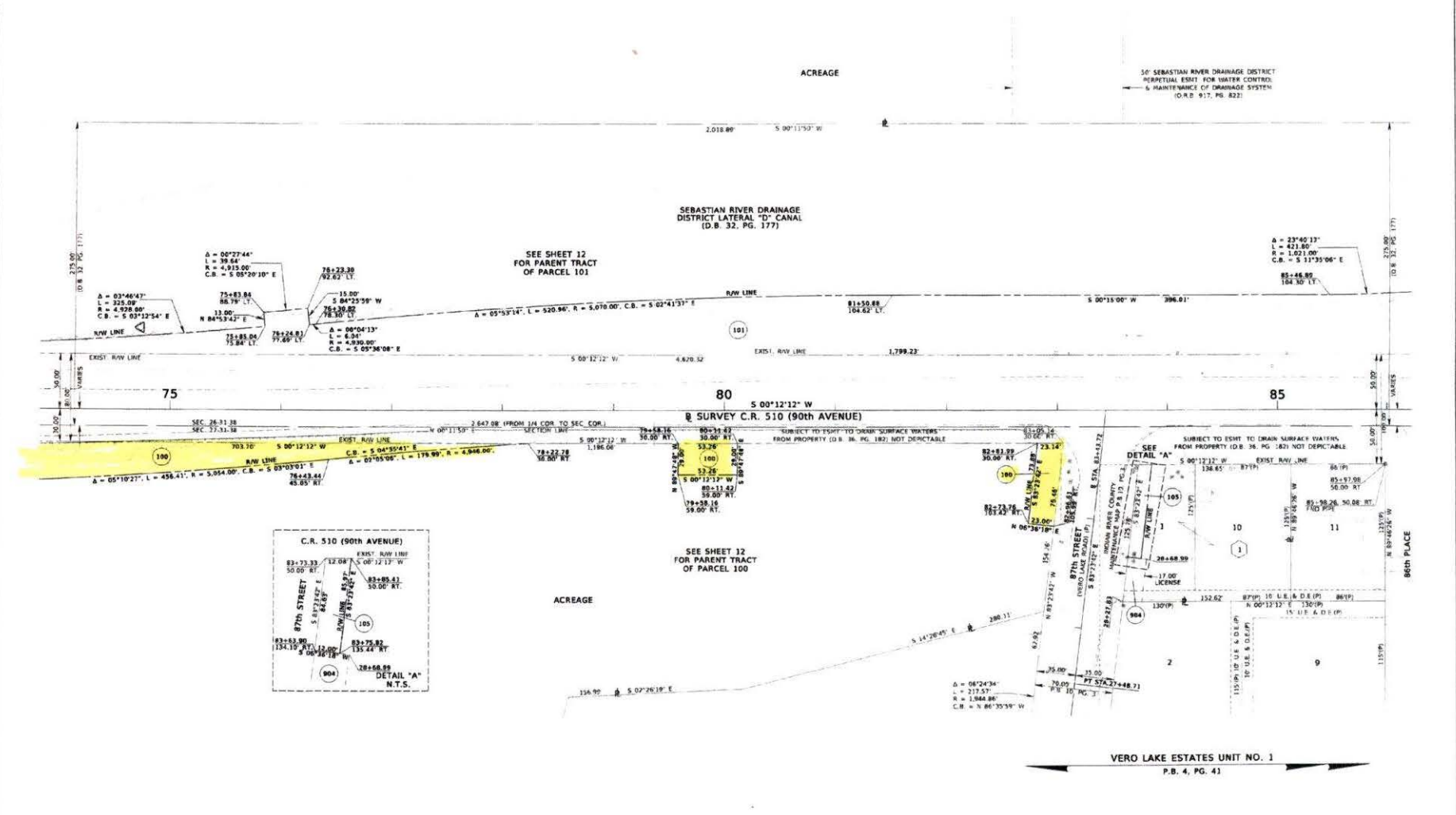
FED. PROJ. D418-081-B, D421-113-B
C.R. 510 (85th STREET / 90th AVENUE)

SECTION 88050-2507
INDIAN RIVER COUNTY

MAP PREPARED BY
F.P. NO. 405606-4

DATA SOURCE
SCALE 1" = 40'
SHEET 6 OF 14

Preliminary
11/07/2022 12:38:46 PM



VERO LAKE ESTATES UNIT NO. 1
P.B. 4, PG. 41

SEE SHEET ONE FOR LEGEND AND GENERAL NOTES

RIGHT OF WAY MAP

FLORIDA DEPARTMENT OF TRANSPORTATION
SURVEYING AND MAPPING

PREPARED BY: *[Signature]*
DATE: 8/24/21
DIRECTOR: K. AUSTON

REVISIONS: BY DATE
REVISIONS: BY DATE

BY DATE
PUBLISHED: 8/24/21
FINAL: 8/24/21

FED. PROJ. D418-081-B, D421-113-B
C.R. 510 (85th STREET / 90th AVENUE)

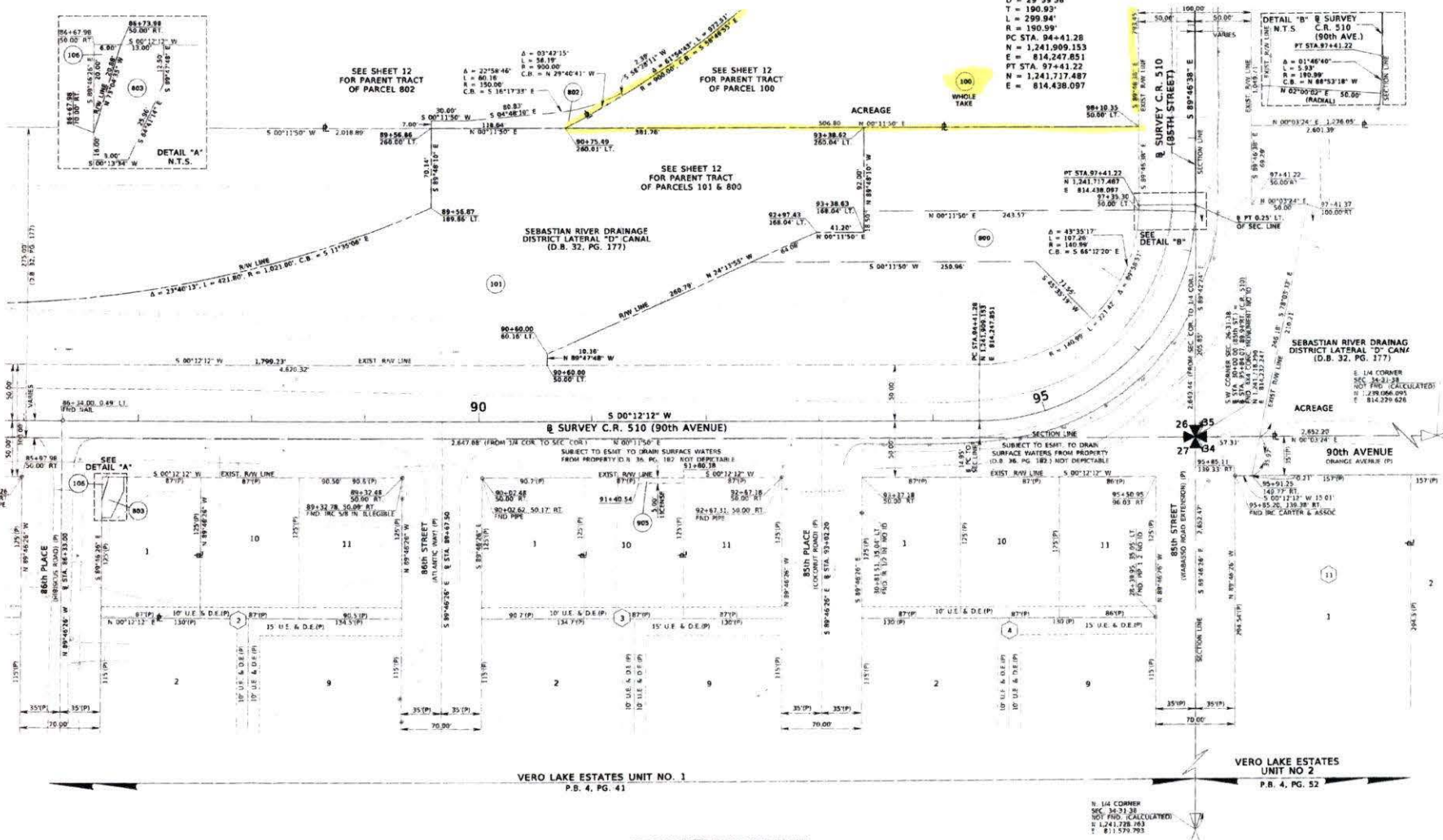
SECTION 88050-2507
INDIAN RIVER COUNTY

MAPS PREPARED BY: [Signature]
DATE SURVEY: 8/24/21
SCALE: 1" = 40'
SHEET 7 OF 14

Preliminary

CURVE DATA @ C.R. 510 11/07/2022 12:38:55 PM

PI STA. 96+32.21
N = 1,241,718.229
E = 814,247.113
Δ = 89°58'31" (LT.)
D = 29°59'58"
T = 190.93'
L = 299.94'
R = 190.99'
PC STA. 94+41.28
N = 1,241,909.153
E = 814,247.851
PT STA. 97+41.22
N = 1,241,717.487
E = 814,438.097



SEE SHEET ONE FOR LEGEND AND GENERAL NOTES

RIGHT OF WAY MAP	FLORIDA DEPARTMENT OF TRANSPORTATION SURVEYING AND MAPPING	APPROVED BY: <i>[Signature]</i>	DATE: 8/26/21	BY: []	DATE: []	FED. PROJ. D418-081-B, D421-113-B	SECTION 88050-2507	MAPS PREPARED BY: []	DATA SOURCE: []		
		REVISION: []	BY: []	DATE: []	REVISION: []	BY: []	DATE: []	CHECKED: []	DATE: []	DATE: []	DATE: []

