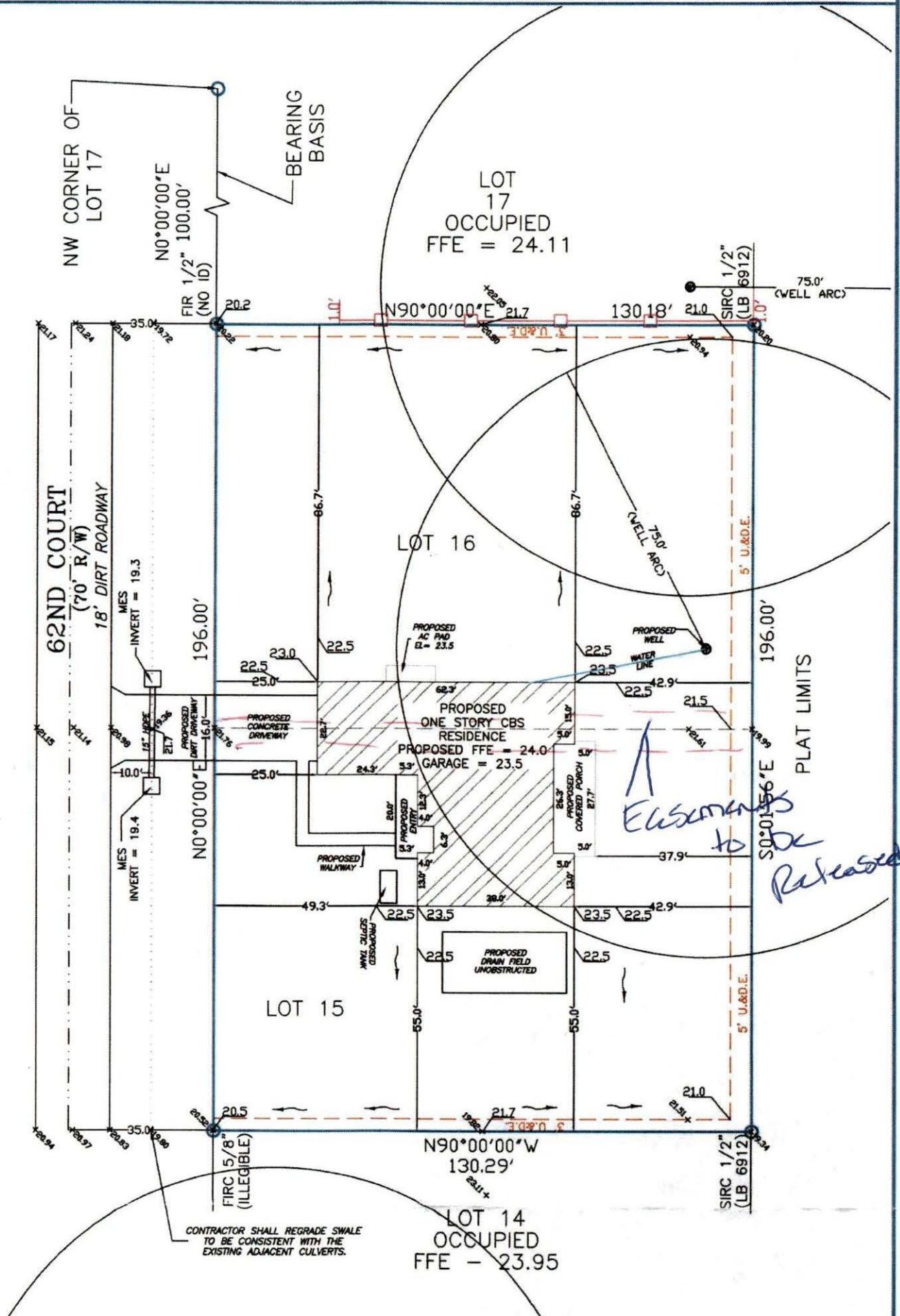


*42*



CONTRACTOR SHALL REGRADE SWALE TO BE CONSISTENT WITH THE EXISTING ADJACENT CULVERTS.

*Easements to be Released*

LOT 14  
 OCCUPIED  
 FFE - 23.95

LOT 17  
 OCCUPIED  
 FFE = 24.11

LOT 15

LOT 16

62ND COURT  
 (70' R/W)  
 18' DIRT ROADWAY

PLAT LIMITS

NW CORNER OF LOT 17

BEARING BASIS

SIRC 1/2" (LB 6912)

75.0' (WELL ARC)

75.0' (WELL ARC)

5' U.&D.E.

5' U.&D.E.

5' U.&D.E.

FIRC 5/8" (ILLEGIBLE)

N90°00'00"W  
 130.29'

SIRC 1/2" (LB 6912)

N0°00'00"E  
 100.00'

N0°00'00"E  
 196.00'

S0°01'56"E  
 196.00'

N90°00'00"E  
 21.7

N90°00'00"W  
 130.29'

130.18'

35.0'

16.0'

49.3'

55.0'

20.5'

86.7'

22.5'

25.0'

22.5'

23.5'

21.7'

86.7'

22.5'

25.0'

22.5'

23.5'

21.7'

10.0'

10.0'

62.3'

5.0'

38.0'

21.7'

21.0'

86.7'

22.5'

23.5'

22.5'

55.0'

21.0'

21.0'

86.7'

22.5'

23.5'

22.5'

55.0'

21.0'

75.0' (WELL ARC)

75.0' (WELL ARC)

5' U.&D.E.

5' U.&D.E.

SIRC 1/2" (LB 6912)

35.0'

16.0'

49.3'

55.0'

20.5'

86.7'

22.5'

25.0'

22.5'

23.5'

21.7'

86.7'

22.5'

25.0'

22.5'

23.5'

21.7'

10.0'

10.0'

62.3'

5.0'

38.0'

21.7'

21.0'

86.7'

22.5'

23.5'

22.5'

55.0'

21.0'

21.0'

86.7'

22.5'

23.5'

22.5'

55.0'

21.0'

75.0' (WELL ARC)

75.0' (WELL ARC)

5' U.&D.E.

5' U.&D.E.

SIRC 1/2" (LB 6912)

35.0'

16.0'

49.3'

55.0'

20.5'

86.7'

22.5'

25.0'

22.5'

23.5'

21.7'

86.7'

22.5'

25.0'

22.5'

23.5'

21.7'

10.0'

10.0'

62.3'

5.0'

38.0'

21.7'

21.0'

86.7'

22.5'

23.5'

22.5'

55.0'

21.0'

21.0'

86.7'

22.5'

23.5'

22.5'

55.0'

21.0'

75.0' (WELL ARC)

75.0' (WELL ARC)

5' U.&D.E.

5' U.&D.E.

SIRC 1/2" (LB 6912)